

## Heavy Duty Silo Mount for Use with 4158 Load Cell

### FEATURES

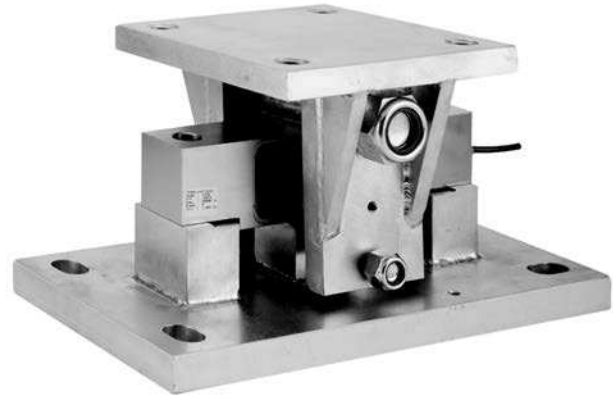
- Capacities up to 75k lbs
- Use on tanks or silos
- All steel construction
- Low profile
- Simple installation

### DESCRIPTION

The 4158 silo mount is suitable for the support of tanks and silos, making it ideal for indoor or outdoor process control applications.

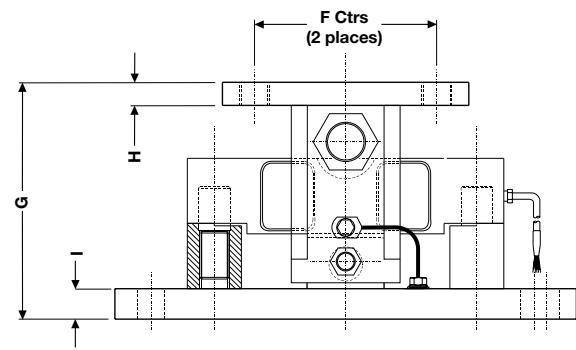
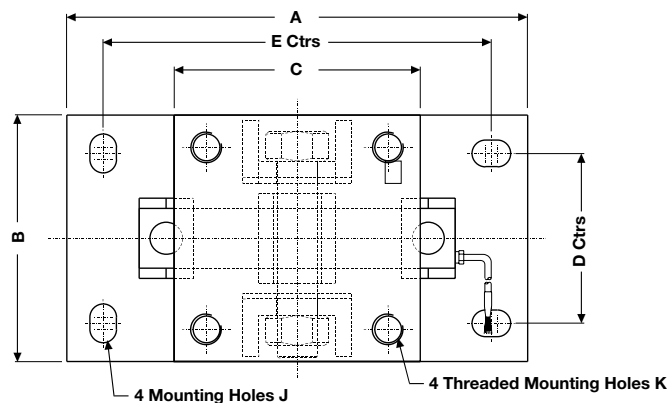
It is designed to support a uniformly distributed load and will allow tilt in any direction up to a maximum of  $\pm 3^\circ$ .

It forms a compact assembly which is rugged and tolerant of heavy industrial environments. Heavy gauge steel plate provides a rigid, robust load cell mount for high accuracy and prolonged life.



It incorporates lift-off protection and allows for thermal expansion of the weighing vessel.

### OUTLINE DIMENSIONS in millimeters



This mount is designed for a uniformly distributed load on the top and bottom surfaces

Each comprises base plate assembly, top plate assembly, loading pin and support, bottom pin, mounting posts, retaining clips, earth strap with bolts and washers.

CAPACITY	A	B	C	D	E	F	G	H	I	J	K
10k-25k lbs	240	180	180	130	190	130	142	12.7	19	Ø18x28	M20
40k lbs	380	203	203	140	320	150	195	19	25	Ø22x32	M24
50k-75k lbs	380	203	203	140	320	150	210	19	25	Ø22x32	M24