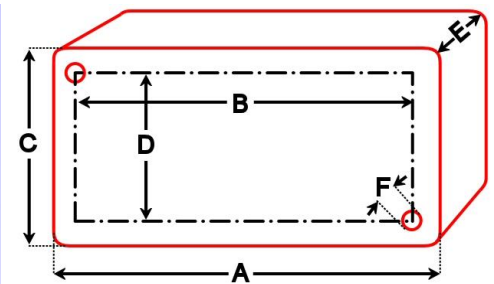


## S7M 115/230V ac powered LVDT transducer amplifier.



A	=	220mm
B	=	204mm
C	=	120mm
D	=	82mm
E	=	81mm
F	=	6mm

Drawing shows base of box

Compatible with	Any standard RDP LVDT (without integral electronics) LIN & PY When fitted with two 1k Ohm bridge completion resistors ( Does not provide analogue voltage linearisation for PY) Most LVDTs from any manufacturer
Supply voltage	230V or 115V ac, 2.5VA, 50/60Hz
Transducer excitation	5V, 5kHz (1kHz to 10kHz with component change), 100mA
Output details	±10V / 4-20mA (loop resistance 0 Ohms to 600 Ohms)
Amplifier gain range	0.15 to 200
Signal input range	20mV (minimum) to 20V
Linearity error	±0.1% F.S. maximum
Electrical output bandwidth	0 to 500Hz
Output ripple	5mV peak-to-peak typical
Input impedance	±100k Ohms
Temperature coefficient (zero)	±0.002% F.S. /°C typical
Temperature coefficient (span)	±0.004% F.S. /°C (typical)
Approximate zero adjustment range	±10V
Operating temperature range	-10°C to 50°C
Total weight	1.8kg
Cable gland cable size (x2)	3.0mm to 6.0mm
Cable gland cable size (x1)	5mm to 10mm