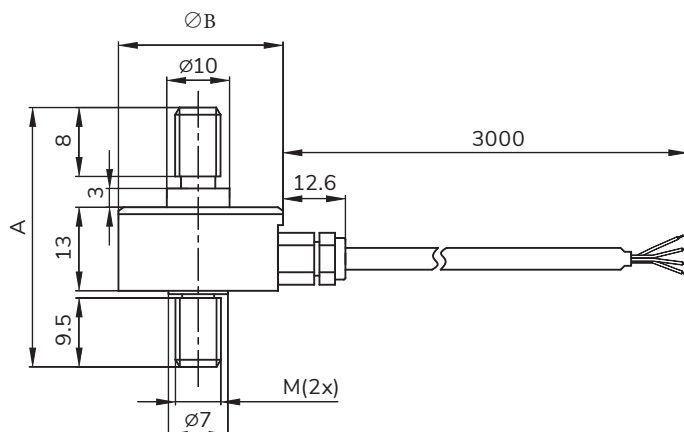


DIMENSIONS



CAPACITIES

CAP (Kg)	SIZE (mm)	A	ØB	M
5/10/15/20/30/50	37	37	25.4	M5
60/100				M6

SPECIFICATIONS

PERFORMANCE

Non-Linearity	±0.5% of RO
Hysteresis	±0.5% of RO
Repeatability	±0.25% of RO
Zero Balance	±2% of RO

ELECTRICAL

Rated Output	2.0 ± 10% mV/V
Recommended Excitation	10 VDC
Maximum Excitation	15 VDC
Input Impedance	700 ± 30 Ω
Output Impedance	700 ± 5 Ω
Insulation	≥5000 MΩ / 100 VDC
Cable Color Code	Input: Red (E+) Black (E-) Output: Green (S+) White (S-)

MECHANICAL

Weight	0.1Kg
Safe Overload	120% of RO
Ultimate Overload	200% of RO
Material	Stainless Steel
Cable Size	Ø3 x 3000 mm
IP Rating	IP65

TEMPERATURE

Operating Temperature	-20 ~ 80°C
Compensated Temp. Range	-10 ~ 60°C
Temp. Effect On Output	±0.2% of RO /
Temp. Effect On Zero	±0.2% of RO / 10°C

CONFORMITY

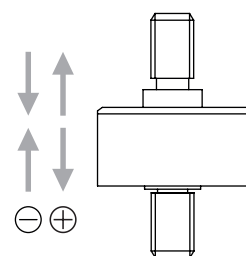
RoHS	2011/65/EU
CE	2014/35/EU



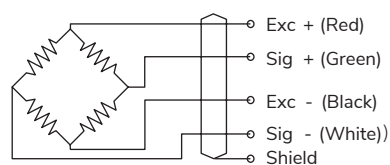
FEATURES & APPLICATIONS

- For In Line Use In Both Tension And Compression
- Minimal Mounting Clearance
- Mainly Used For Miniature Tension And Pressure Test Equipment

LOAD DIRECTION



SCHEMATIC WIRING DIAGRAM



Note: Cable shield is not connected to element.