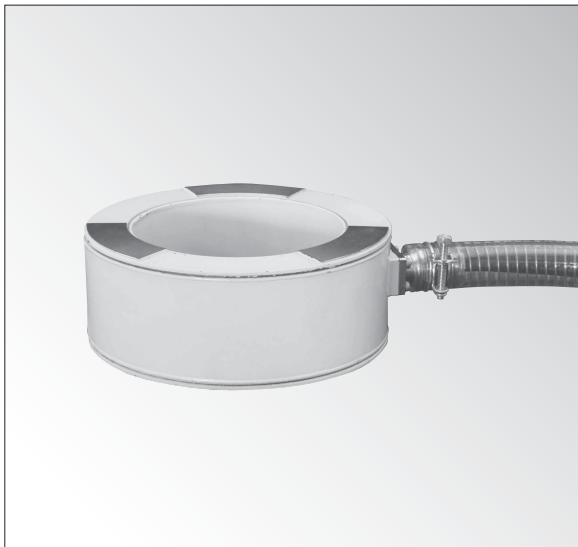


## Hollowed Load Cell



To endure field applications, these transducers feature a waterproof design, lightweight, and thin design.

- Eccentric load or inner/outer load causes less sensitivity deviation.
- Large center hollow making it suitable for VSL method
- Waterproof structure, Degree of Protection IP68 (IEC 60529) (Under 0.5 MPa water pressure, for 24 h at 23°C ±15°C)
- Thin design
- Designed to measure load of VSL anchors etc.
- Lightweight

● Load measurement ● 500 kN to 2 MN

## Specifications

## Performance

|                |                   |
|----------------|-------------------|
| Rated Capacity | See table below.  |
| Nonlinearity   | Within ±0.8% RO   |
| Hysteresis     | Within ±0.5% RO   |
| Rated Output   | 1.25 mV/V or more |

## Environmental Characteristics

|                              |                     |
|------------------------------|---------------------|
| Safe Temperature             | -20 to 70°C         |
| Compensated Temperature      | -10 to 60°C         |
| Temperature Effect on Zero   | Within ±0.05% RO/°C |
| Temperature Effect on Output | Within ±0.05%/°C    |

## Electrical Characteristics

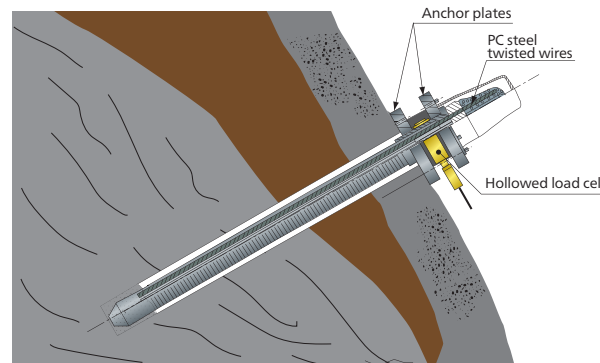
|                        |  |
|------------------------|--|
| Safe Excitation        | 15 V AC or DC  |
| Recommended Excitation | 1 to 10 V AC or DC   |
| Input Resistance       | 350 Ω ±0.3%  |
| Output Resistance      | 350 Ω ±2%  |
| Cable                  | 4-conductor (0.5 mm <sup>2</sup> ) chloroprene shielded cable, 9.6 mm diameter by 1 m long, bared at the tip (Shield wire is not connected to the case.) |

## Mechanical Properties

|                      |   |
|----------------------|---|
| Safe Overloads       | 150%  |
| Degree of Protection | IP68 (IEC 60529) (Under 0.5 MPa water pressure, for 24 h at 23°C ±15°C) |
| Weight               | See table below.  |

## Application Example

Tension measurement of earth retaining or retaining wall

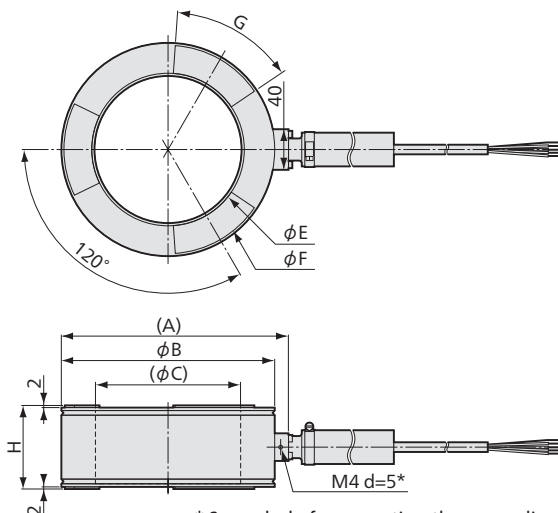


| Models         | Rated Capacity | (A)   | φB  | (φC) | H  | φE  | φF  | G   | Weight (Approx.) |
|----------------|----------------|-------|-----|------|----|-----|-----|-----|------------------|
| ● BLW-A-500KN  | 500 kN         | 188   | 175 | 125  | 64 | 131 | 170 | 45° | 4 kg             |
| ● BLW-A-1MN    | 1 MN           | 223.5 | 210 | 144  | 82 | 150 | 205 | 52° | 8 kg             |
| ● BLW-A-1500KN | 1500 kN        | 263.5 | 250 | 155  | 94 | 161 | 245 | 46° | 14 kg            |
| ● BLW-A-2MN    | 2 MN           | 263.5 | 250 | 155  | 94 | 161 | 245 | 60° | 14.5 kg          |

● For delivery date, please contact us.

φC: Hollow diameter

## Dimensions



\* Screw hole for mounting the grounding terminal of lightning arrester kit.

