

# LTR-S-SA1

- 20 to 50 kN
- For tractive force or tensile force of ropes

## One-end Revolving Tension Load Cell



**Compact & lightweight**  
**Moderate price**  
**For measurement of tractive force and tensile force of ropes**

LTR-S-SA1 series load cells are suitable for measurement of tensile force of ropes. Since the hook at one end revolves together with the rope which may revolve due to twisting, easy installation and handling are ensured.

### Specifications

#### Performance

Rated Capacity	See table below.
Nonlinearity	Within $\pm 0.5\%$ RO
Hysteresis	Within $\pm 0.5\%$ RO
Rated Output	Approx. 1 mV/V

#### Environmental Characteristics

Safe Temperature	-20 to 70°C
Compensated Temperature	-10 to 60°C
Temperature Effect on Zero	Within $\pm 0.05\%$ RO/°C
Temperature Effect on Output	Within $\pm 0.05\%$ /°C

#### Electrical Characteristics

Safe Excitation	12 V AC or DC
Recommended Excitation	1 to 5 V AC or DC
Input Resistance	350 $\Omega$ $\pm 2\%$
Output Resistance	350 $\Omega$ $\pm 2\%$
Cable	4-conductor (0.3 mm <sup>2</sup> ) chloroprene shielded cable, 7.6 mm diameter by 5 m long, terminated with a connector plug PRC03-12A10-7M (Shield wire is not connected to the case.)

#### Mechanical Properties

Safe Overloads	150%
Ultimate Overloads	200%
Weight	Approx. 3.6 kg (Excluding cable)

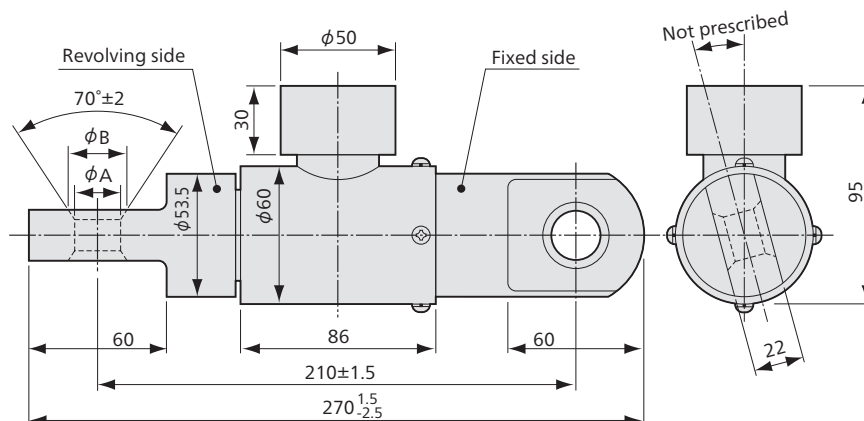
Models	Rated Capacity	$\phi A$	$\phi B$
● LTR-S-20KNSA1	20 kN	20	26
● LTR-S-30KNSA1	30 kN		
● LTR-S-50KNSA1	50 kN	22	29

● For delivery date, please contact us.

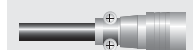
### To Ensure Safe Usage

- When loaded, sliding friction prevents the revolving part from revolving.
- Do not use for measurement of hanging loads.

### Dimensions



Connector plug  
PRC03-12A10-7M



Load Cells  
(Load Transducers)

Outline

Compressive

Tensile

Tensile & compressive

Component

Special

Other