

Load Cells
(Load Transducers)

Outline

Compressive

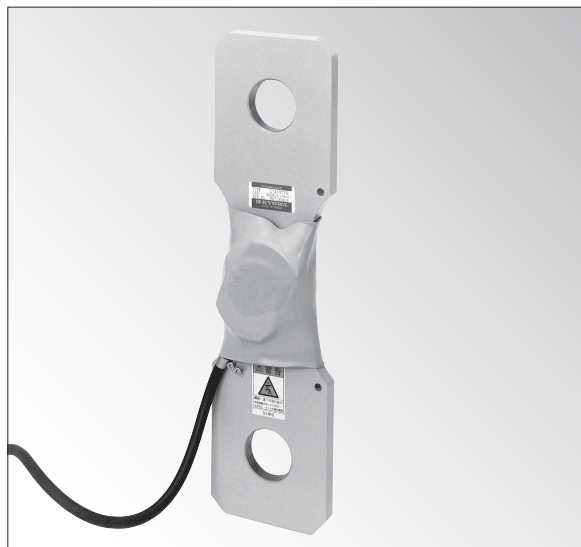
Tensile

Tensile &
compressive

Component

Special

Other



High reliability & stability Easy to handle

These series of tension load cells are used as detectors for jib crane weighing systems and for general tension measurement.

Specifications

Performance

Rated Capacity	See table below.
Nonlinearity	Within $\pm 1\%$ RO
Hysteresis	Within $\pm 1\%$ RO
Rated Output	0.6 to 0.7 mV/V

Environmental Characteristics

Safe Temperature	-20 to 70°C
Compensated Temperature	-10 to 60°C
Temperature Effect on Zero	Within $\pm 0.05\%$ RO/°C
Temperature Effect on Output	Within $\pm 0.05\%$ RO/°C

Electrical Characteristics

Safe Excitation	12 V AC or DC
Recommended Excitation	1 to 10 V AC or DC
Input Resistance	350 Ω $\pm 5\%$
Output Resistance	350 Ω $\pm 5\%$
Cable	4-conductor (0.75 mm ²) chloroprene shielded cable, 10 mm diameter by 10 m long, with crimp-style terminals (For 4 mm) (Shield wire is not connected to the case.)

Mechanical Properties

Ultimate Overloads	Approx. 500%
Safe Overloads	150%
Weight	See table below.

Models	Rated Capacity	A	B	C	D	T	Weight (Approx.) *
● LTA-C-20KNS	20 kN	310	410	90	$\phi 45$	14	5 kg
● LTA-C-50KNS	50 kN	310	430	110	$\phi 45$	15	5.5 kg
● LTA-C-100KNS	100 kN	330	470	126	$\phi 60$	30	11 kg
● LTA-C-200KNS	200 kN	360	540	170	$\phi 65$	36	21 kg
● LTA-C-300KNS	300 kN	400	610	195	$\phi 75$	47	35 kg
● LTA-C-500KNS	500 kN	440	670	240	$\phi 85$	60	60 kg

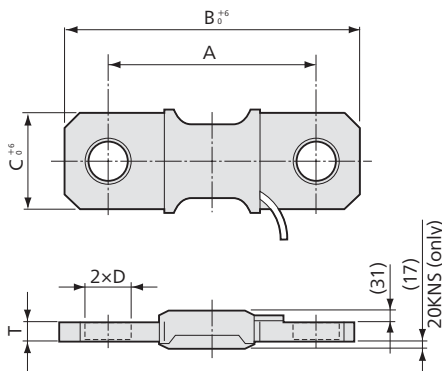
● For delivery date, please contact us.

*Excluding cable

To Ensure Safe Usage

- Install the load cell carefully to avoid applying tensile and impact force to the cable and prevent the load cell from receiving bending or twisting force.
- Prepare a safety device such as a link against accidental hazards so that it supports loads in case of a broken load cell.

Dimensions



Crimp-style terminals

