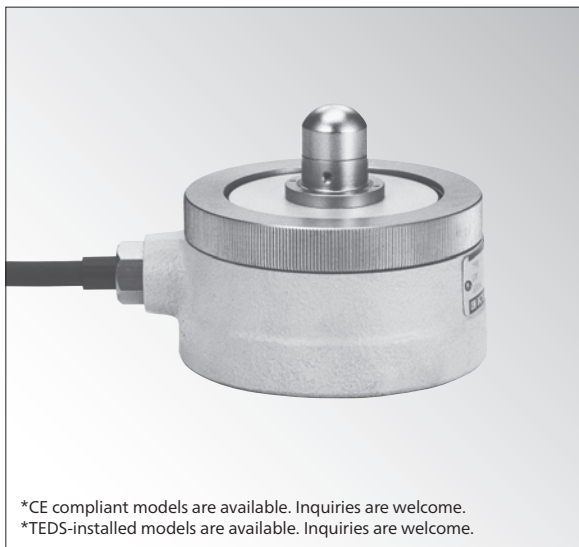


Small-capacity Tension/Compression Load Cell



Small capacity High sensitivity Tension/Compression load cells

A straight beam is used as the diaphragm to enable highly accurate measurement of small loads.

Specifications

Performance

Rated Capacity	See table below.
Nonlinearity	Within $\pm 0.3\%$ RO
Hysteresis	Within $\pm 0.2\%$ RO
Repeatability	0.2% RO or less
Rated Output	1.5 mV/V $\pm 0.5\%$

Environmental Characteristics

Safe Temperature	-20 to 75°C
Compensated Temperature	-10 to 65°C
Temperature Effect on Zero	Within $\pm 0.01\%$ RO/°C
Temperature Effect on Output	Within $\pm 0.01\%$ /°C

Electrical Characteristics

Safe Excitation	15 V AC or DC
Recommended Excitation	1 to 10 V AC or DC
Input Resistance	350 Ω $\pm 0.5\%$
Output Resistance	350 Ω $\pm 0.5\%$
Cable	4-conductor (0.3 mm ²) chloroprene shielded cable, 7.6 mm diameter by 5 m long, terminated with a connector plug PRC03-12A10-7M (Shield wire is connected to the case.)

Mechanical Properties

Safe Overloads	120%
Natural Frequencies	See table below.
Weight	Approx. 2.3 kg (Excluding cable)

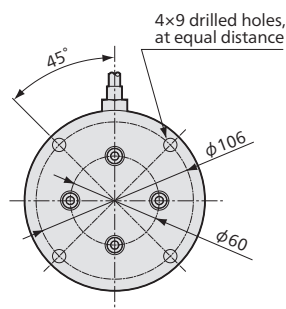
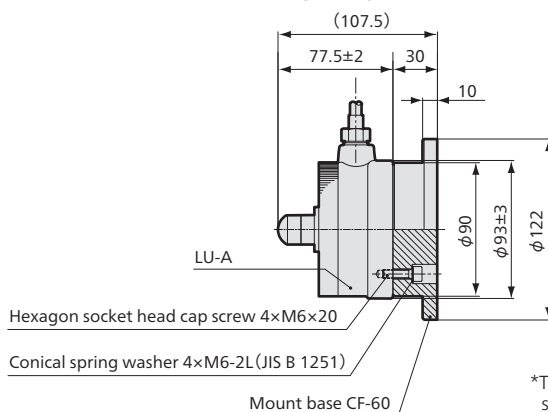
Optional Accessories Mount base CF

Models	Rated Capacity	Natural Frequencies (Approx.)
●LU-5KA	± 50 N	200 Hz
●LU-10KA	± 100 N	330 Hz
●LU-20KA	± 200 N	500 Hz

●For delivery date, please contact us.

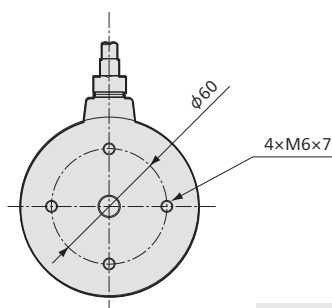
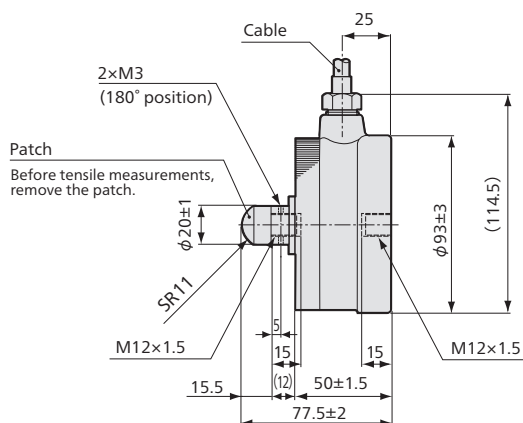
■Dimensions in combination with mount base

●In combination with mount base (CF-60)



*The hexagon socket head cap screws and conical spring washers are standard accessories of mount base.

■Dimensions



Connector plug
PRC03-12A10-7M

