

LCW-D-S/E-S

Washer-type Load Cell

- For rolling & depressing pressure measurement under harsh environment
- 1 to 5 MN

2
-32

TRANSDUCERS



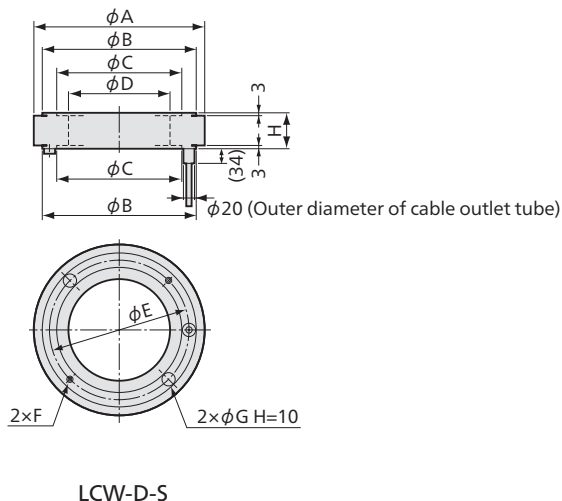
*Load cells which meet individual rolling mills are available.
Inquiries are welcome.

Flat washer-type load cell well suited to rolling mills

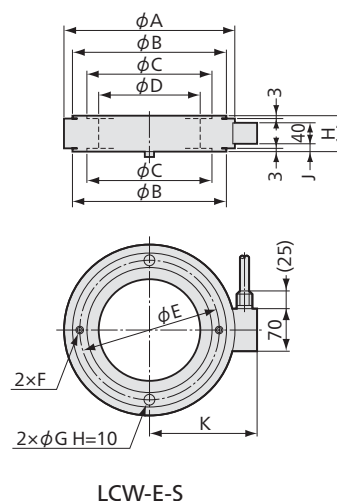
- Hermetically-sealed structure with inert gas filled in
- Heat and oil resistant cable.
- High reliability

The hermetically-sealed structure with inert gas filled in ensures a reliable and stable operation under harsh conditions. The flat washer type structure only requires processing of the screw nuts for installation to existing rolling mills.

Dimensions

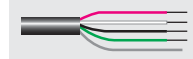


LCW-D-S



LCW-E-S

Bared at the tip



| Models | Rated Capacity | Natural Frequencies (Approx.) | ϕA | ϕB | ϕC | ϕD | ϕE | F | ϕG | H | J | K | Weight* (Approx.) |
|-------------|----------------|-------------------------------|-----|-----|-----|-----|-----|----------|----|----|----|-----|-------------------|
| ●LCW-D-1MNS | 1 MN | 16 kHz | 241 | 202 | 178 | 140 | 190 | M8 d=8 | 8 | 64 | — | — | 7 kg |
| ●LCW-D-2MNS | 2 MN | 14 kHz | 355 | 307 | 277 | 230 | 292 | M10 d=10 | 12 | 70 | — | — | 15 kg |
| ●LCW-D-3MNS | 3 MN | 15 kHz | 355 | 314 | 270 | 230 | 292 | M10 d=12 | 20 | 70 | — | — | 17 kg |
| ●LCW-D-5MNS | 5 MN | 16 kHz | 355 | 312 | 252 | 210 | 282 | M10 d=12 | 20 | 70 | — | — | 20 kg |
| ●LCW-E-1MNS | 1 MN | 16 kHz | 241 | 202 | 178 | 140 | 190 | M8 d=8 | 8 | 64 | 16 | 154 | 7 kg |
| ●LCW-E-2MNS | 2 MN | 14 kHz | 355 | 307 | 277 | 230 | 292 | M10 d=10 | 12 | 70 | 18 | 212 | 15 kg |
| ●LCW-E-3MNS | 3 MN | 15 kHz | 355 | 314 | 270 | 230 | 292 | M10 d=12 | 20 | 70 | 18 | 212 | 17 kg |
| ●LCW-E-5MNS | 5 MN | 16 kHz | 355 | 312 | 252 | 210 | 282 | M10 d=12 | 20 | 70 | 18 | 212 | 20 kg |

●For delivery date, please contact us.

*Excluding cable



Load Cells
(Load Transducers)

Outline

Compressive

Tensile

Tensile & compressive

Component

Special

Other