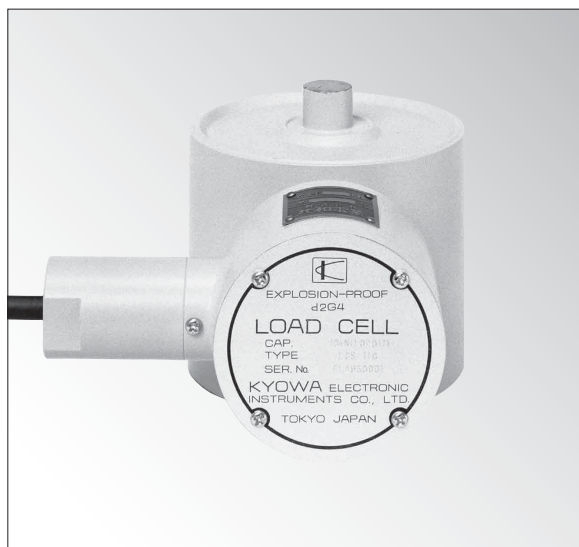


Explosion-proof Construction Compression Load Cell



Compression load cell with explosion-proof construction

*Please contact us for details.

Specifications

Performance

Rated Capacity	See table below.
Nonlinearity	Within $\pm 0.2\%$ RO
Hysteresis	Within $\pm 0.2\%$ RO
Repeatability	0.2% RO or less
Rated Output	2 mV/V $\pm 0.2\%$

Environmental Characteristics

Safe Temperature	-15 to 75°C
Compensated Temperature	-10 to 70°C
Temperature Effect on Zero	Within $\pm 0.007\%$ RO/°C
Temperature Effect on Output	Within $\pm 0.005\%$ /°C
Explosion-proof Environmental Conditions	
Ambient Temperature: -10 to 40°C	
Relative Humidity: 45 to 85%	

Electrical Characteristics

Safe Excitation	15 V AC or DC
Recommended Excitation	1 to 10 V AC or DC
Input Resistance	350 $\Omega \pm 0.5\%$
Output Resistance	350 $\Omega \pm 0.5\%$
Cable	4-conductor (0.3 mm ²) chloroprene shielded cable, 7.6 mm diameter by 5 m long, terminated with a connector plug PRC03-12A10-7M (Shield wire is connected to the case.)

Mechanical Properties

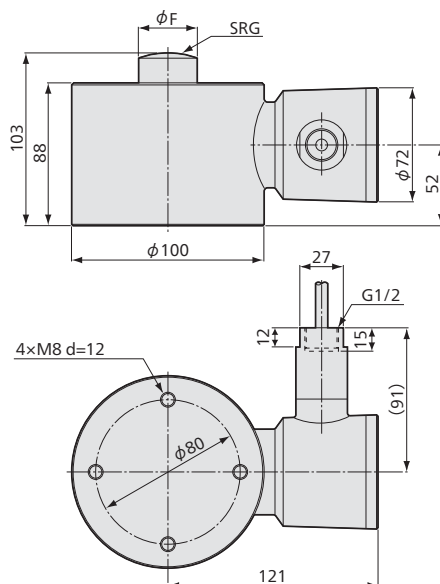
Safe Overloads	120%
Natural Frequencies	See table below.
Weight	Approx. 4.5 kg

Optional Accessories	Saddle CA Mount base CF Movable saddle ER-B Junction box JBS-C
----------------------	---

Models	Rated Capacity	SRG	Natural Frequencies (Approx.)	ϕF	Saddle	Movable Saddle	Mount Base
● LCS-500KD	5 kN	30	4 kHz	18	—	—	CF-80
● LCS-1TD	10 kN		5.3 kHz				
● LCS-2TD	20 kN	50	6.2 kHz	23	CA-10B	ER-5B	CF-80
● LCS-5TD	50 kN		6 kHz	24			

● For delivery date, please contact us.

■ Dimensions



Connector plug
PRC03-12A10-7M

