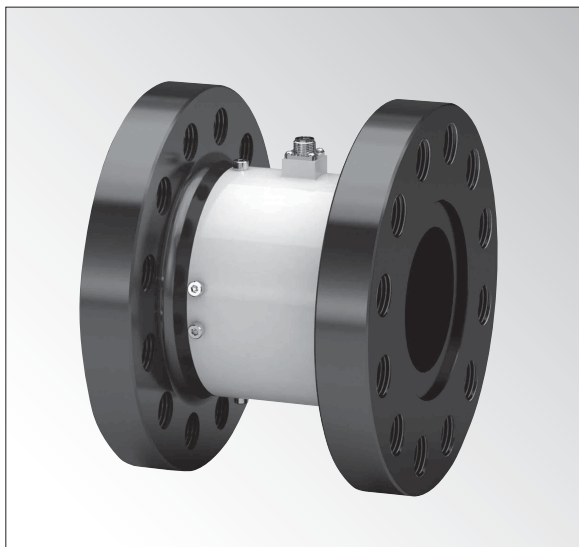


TPR-S-10KNMSA48

Non-rotary Type Torque Transducer

2
-140

TRANSDUCERS



- Compact & large capacity (± 10 kN·m)
- Being hollowed structure, lightweight (approx. 10 kg)
- Easily install with bolts on the flange.

- Large capacity
- Compact & lightweight
- 10 kN·m

Specifications

Performance

| | |
|----------------|------------------|
| Rated Capacity | ± 10 kN·m |
| Nonlinearity | $\pm 0.3\%$ RO |
| Hysteresis | $\pm 0.3\%$ RO |
| Rated Output | Approx. 1.5 mV/V |

Environmental Characteristics

| | |
|------------------------------|--------------------|
| Safe Temperature | 0 to 60°C |
| Compensated Temperature | 0 to 60°C |
| Temperature Effect on Zero | $\pm 0.05\%$ RO/°C |
| Temperature Effect on Output | $\pm 0.05\%$ /°C |

Electrical Characteristics

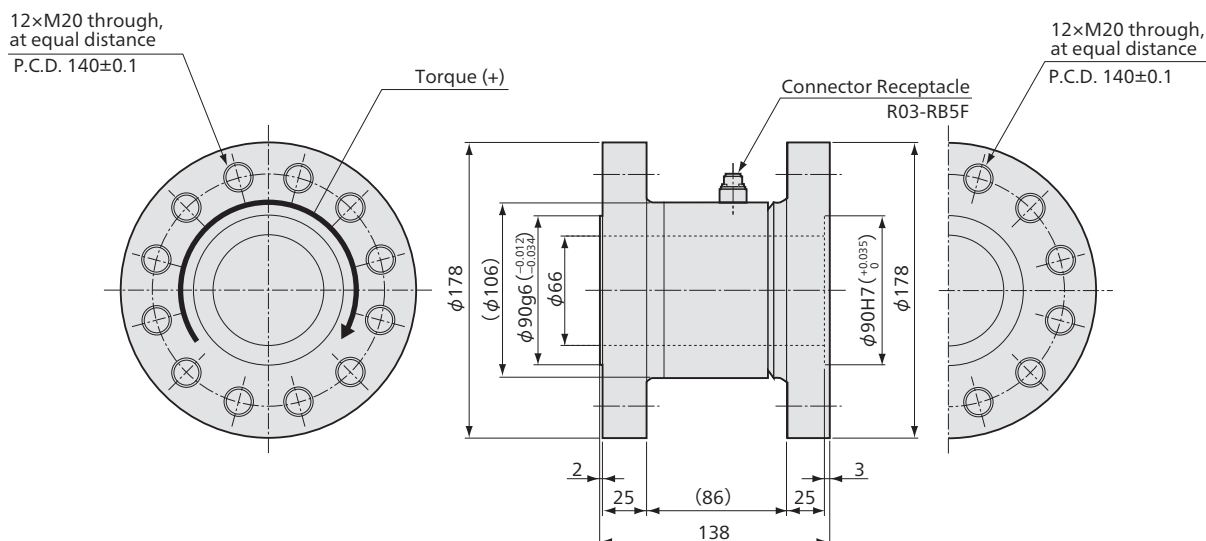
| | |
|------------------------|--|
| Safe Excitation | 15 V AC or DC |
| Recommended Excitation | 1 to 10 V AC or DC |
| Input Resistance | $350 \Omega \pm 2\%$ |
| Output Resistance | $350 \Omega \pm 2\%$ |
| Cable | 4-conductor (0.3 mm ²) chloroprene shielded cable, 6 mm diameter by 10 m long |
| | Sensor side: R03-P5M |
| | Measuring instrument side: PRC03-12A10-7M (Shield wire is not connected to the case.) |

Mechanical Properties

| | |
|----------------|--|
| Safe Overloads | 120% |
| Weight | Approx. 10.5 kg (Excluding cable) |
| Material | Main body: Alloy steel Case: Common steel |

● For delivery date, please contact us.

Dimensions



*It's a non-waterproof model, don't cover it with water.

*Being non-rotary type, it is impossible to measure rotary torque.

Connector plug
PRC03-12A10-7M



Torque
Transducers