

# DUAL STUD MOUNT LOAD CELL

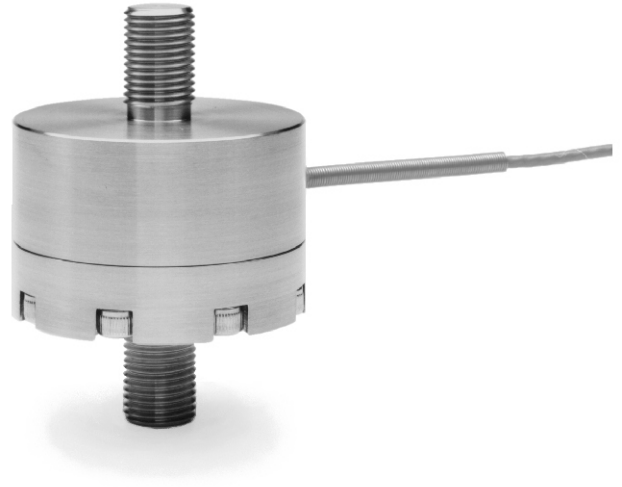
## UNIVERSAL / TENSION OR COMPRESSION

### DSM SERIES

#### CAPACITY RANGES:

50, 100, 200, 500,  
1,000, 2,000, 2,500,  
5,000, 8,000, 10,000 LBS.

The DSM Series Dual Stud Mount load cells are supplied with a stud at each end for easy in line mounting in ranges from 50 lbs. through 10,000 lbs. These load cells are highly accurate and are manufactured from heat treated 17-4ph stainless steel. The sensing element incorporates bonded foil strain gages of the highest quality, and are sealed for protection against most industrial environments.



#### SPECIFICATIONS

Rated Output (R.O.):	2 mV/V nominal
Nonlinearity:	0.15% of R.O.
Hysteresis:	0.15% of R.O.
Nonrepeatability:	0.05% of R.O.
Zero Balance:	1.0% of R.O.
Compensated Temp. Range:	60° to 160°F
Safe Temp. Range:	-65° to 200°F
Temp. Effect on Output:	0.005% of Load/°F
Temp. Effect on Zero:	0.005% of R.O./°F
Terminal Resistance:	350 ohms nominal
Excitation Voltage:	10 VDC
Safe Overload:	150% of R.O.
Deflection Inches:	0.002 @ R.O.

