

# CC1 / CC1B compression load cell



## product description

The type CC1 & CC1B is a stainless steel compression type load cell with complete hermetic sealing, commonly used as a POC/polished rod load cell within the oil pumping industry. Both are designed to withstand harsh industrial environments. Outputs include mV/V and 4-20mA with various cable connector options available. The range services capacity at 30 klb & 50 klb.

## applications

Pump monitoring systems (POC / polished rod load cell).

## accessories

Compatible range of electronics

Various interconnecting cables

Spherical washers

## key features

Capacity of 30 klb (13.6 t) & 50 klb (22.7 t)

Stainless steel construction

Environmental Protection IP68 with complete hermetic sealing

Traceable calibration in accordance with NIST (National Institute of Standards and Technology)

CC1 - mV/V output with standard 6-pin MOLEX connector

CC1B - 4-20mA output with optional Amphenol Connector Type MIL-DTL-5015 type connector



RoHS  
compliant



OIML valid for standard CC1 variant only. Not yet available for CC1B.



## specifications

Maximum capacity (E <sub>max</sub> )	klb	30	50
Metric equivalents (1 klb=0.45359 t)	t	13.6	22.7
Packed weight	Kg	2.45	2.54
Temperature effect on zero output (TC <sub>0</sub> )	%*RO/°C	≤ ± 0.027 (≤ ± 0.0015 %	
Temperature effect on sensitivity (TC <sub>RO</sub> )	%*RO/°C	*RO/°F) ≤ ± 0.036 (≤ ±	
Non-linearity	%*RO	0.002 %*RO/°F) ≤ ± 0.05	
Hysteresis	%*RO	≤ ± 0.05	
Repeatability	%*RO	≤ ± 0.02	
Insulation resistance (100 V DC)	MΩ	≥ 500	
Zero balance	%*RO	≤ ± 1	
Input resistance (RLC)	Ω	800 ± 50	
Output resistance (R <sub>out</sub> )	Ω	700 ± 0.5%	
Safe load limit (E <sub>lim</sub> )	%*E <sub>max</sub>	200	
Compensated temperature range	°C	-25...+65 (-14...+150 °F)	
Operating temperature range	°C	-55...+80 (-70...+190 °F)	
Load cell material		Stainless steel 17-4 PH (1.4548)	
Sealing		Complete hermetic sealing; cable entry sealed by glass to metal header	
Protection according EN 60 529		IP68 (up to 2 m water depth) / IP69K	

### CC1 Specific Specifications

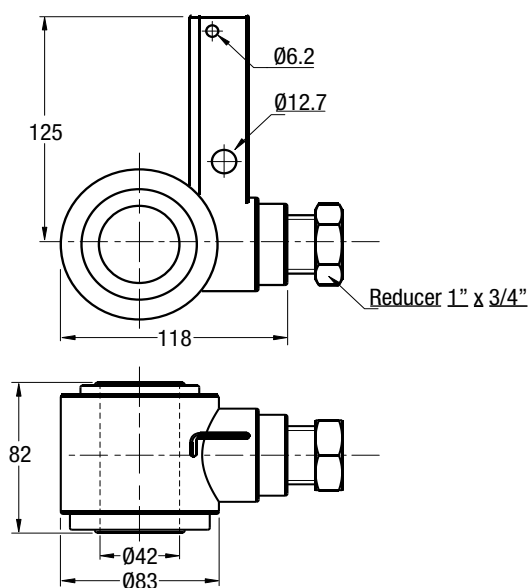
Rated output (RO)	mV/V	2 ± 0.5%
Excitation voltage	V	5...15

### CC1B Specific Specifications

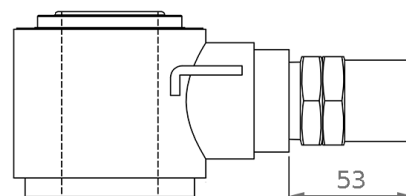
Rated output (RO)	mA	4-20
Supply voltage	V	15 - 24



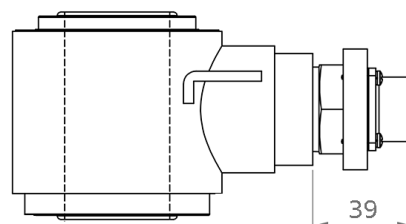
## product dimensions (mm)



MOLEX 6-pin male connector

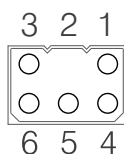


Amphenol Connector Type MIL-DTL-5015

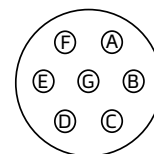


## wiring

표준으로 CC1 & CC1B에는 MOLEX 6 핀 수 커넥터와 나사 커넥터 셸이 제공됩니다. CC1B는 Amphenol Connector Type MIL-DTL-5015와 함께 제공됩니다..



Connector pin	Function CC1	Function CC1B
1	- Excitation	Output / TX -
2	Not connected	Not connected
3	-Signal	Supply / TX +
4	+ Excitation	Not connected
5	Ground	Shield
6	+ Signal	Not connected



Connector pin	Function CC1B
A	Not connected
B	Shield
C	Not connected
D	Output / TX -
E	Not connected
F	Supply / TX +
G	Not connected

Specifications and dimensions are subject to change without notice.