

LOAD CELL L16A



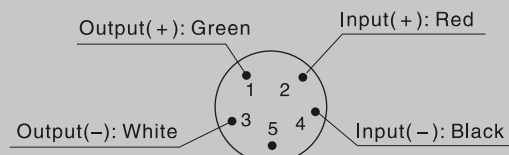
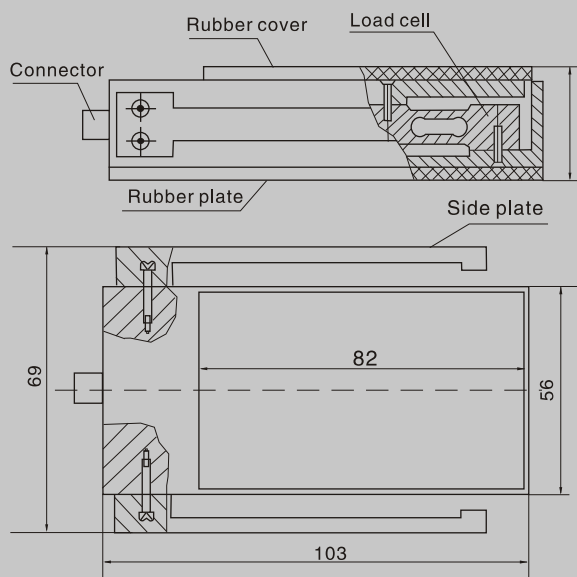
- L16A load cell is available in the capacity 100kg.
- Aluminum construction, silicone adhesive sealed, surface anodized and anti-corrosion.
- Integral structure and easy installation.
- They are suitable for pedal and brake measurement.

Important Features

- Capacity: 100kg.
- High accuracy.
- Aluminum-alloy parallel beam construction.
- Integral installation.

Specifications

Capacity	kg	100
Output Sensitivity	mv/v	1.3 ± 0.3
Accuracy class		G1
Temperature effect on zero	%FS/10°C	0.1
Temperature effect on Sensitivity	+20°C~+40°C	0.1
	-10°C~+20°C	0.1
Combined error	%FS	0.1
Creep	%FS	0.1
Input resistance	Ω	778 ± 15
Output resistance	Ω	700 ± 5
Insulation resistance	M Ω	≥ 5000
Zero balance	%FS	2
Temperature, compensated	°C	-10 ~ +40
Temperature, operating	°C	-20 ~ +50
Excitation, Recommended	V	5~15
Safe overload	%FS	150
Ultimate overload	%FS	300

Outline Dimension mm (inch)

Note: Side plate mounted with 0.3m Nylon tape.

- Dimensions and specifications are subject to change without notice.

Wiring:

- Adopt a shielded, 4 conductor cable, and cable jacket is PVC.
- Cable length: 6 ± 0.05 m.
- Cable diameter: 3.8 ± 0.1 mm.